

### DESCRIPTION

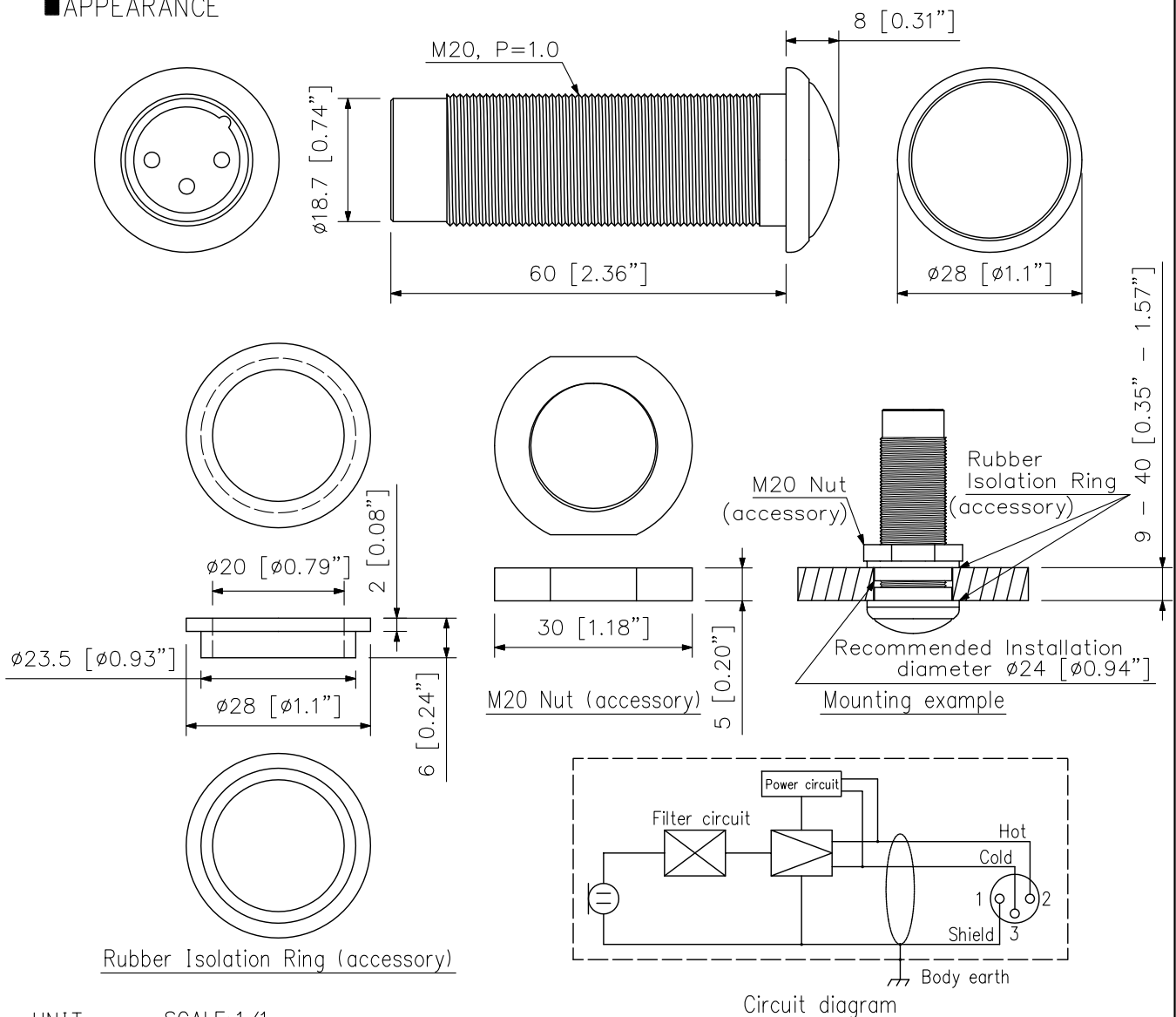
The EM-600 is an omnidirectional condenser microphone of only 28 mm (1.1") in diameter designed for sound pick-up application. It can be flush-mounted into a ceiling, wall, or desk, making it unobtrusive. It provides clear and high-quality sound.

### SPECIFICATIONS

Element	Electret condenser
Polar Pattern	Omnidirectional
Rated Impedance	120 Ω, balanced
Rated Sensitivity	-36 dB (1 kHz 0 dB=1 V/Pa)
Phantom Power	9 - 52 V DC
Frequency Response	30 Hz - 20 kHz
Output Connector	XLR-3-12 equivalent
Operating Temperature	0 °C to +40 °C (32 °F to 104 °F)
Finish	Body: Steel, white, semi-gloss, paint Head: Zinc-plated steel wire, white, semi-gloss, paint
Dimensions	∅28 × 68 mm (∅1.1" × 2.68")
Weight	85 g (0.19 lb)
Accessory	Rubber Isolation Ring ∙2, M20 Nut ∙1

※ The EM-600 requires 9 - 52 V DC phantom power for operation.

### APPEARANCE



UNIT:mm SCALE:1/1