



# WIRELESS GUIDE SYSTEM



*Be Heard, Be Clear*

## Features

16 different frequencies can be used simultaneously.

Compact, light, and easy to operate—  
even for the very first time.

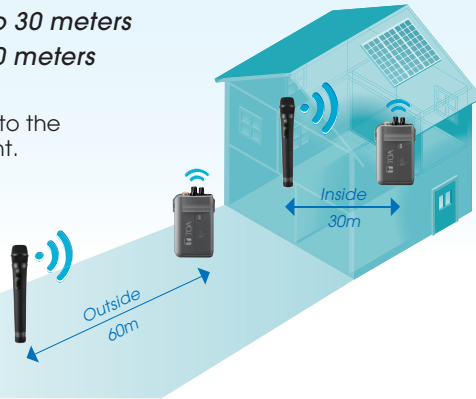
Both the wireless transmitter and receiver use the TOA  
WB-2000-2 rechargeable battery, with the WT-5100  
wireless receiver providing up to 16 hours  
of continuous operation.

Frequency range of 576 to 865 MHz. Note: varies by country.

One wireless transmitter can be assigned an unlimited  
number of wireless portable receivers.

Clear coverage up to 30 meters  
indoors and up to 60 meters  
outdoors.

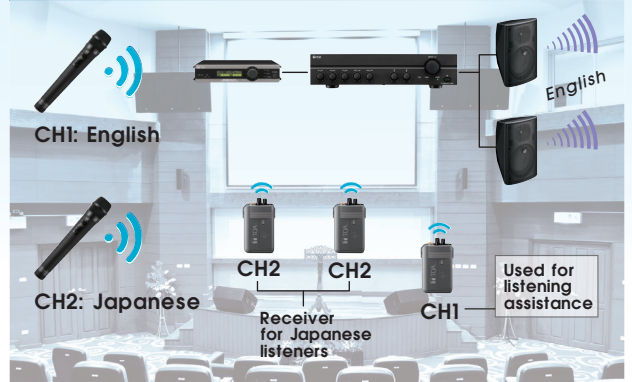
Note: varies according to the  
surrounding environment.



## Guided Tour Applications



## Conference Applications



## Lineup

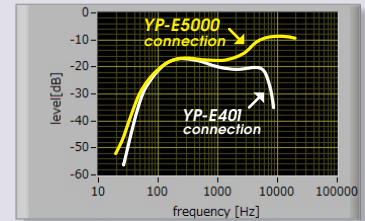
### WT-5100 Wireless Portable Receiver



- Tunable to any of 16 different frequencies
- Runs for 16 hours on a fully charged WB-2000-2 rechargeable battery
- Battery status indicator
- Compact and lightweight body

### Optional Earphones

- YP-E401**
  - $\phi$  3.5 mm mini plug (2 pole)
- YP-E5000**
  - $\phi$  3.5 mm mini plug (3 pole)
  - Assist earphone



The YP-E5000 Assist Earphone boosts high frequencies in voice output, making it ideal for assistive listening applications.

### WM-5325 Wireless Portable Transmitter



- Microphone sensitivity adjustment (-14 dB to -20 dB)
- 13 hours of quality performance from a fully charged WB-2000-2 rechargeable battery
- Battery status indicator
- Compact and lightweight body

### Optional Microphones

- YP-M5300**
  - Unidirectional lavalier microphone
- YP-M5310**
  - Omnidirectional lavalier microphone
- WH-4000H**
  - Unidirectional headset microphone



### WM-5225 Wireless Handheld Microphone

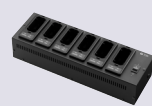


- Condenser cardioid microphone capsule
- Ideal for speech-related applications
- Turns on/off with one hand
- 13 hours of quality performance from a fully charged WB-2000-2 rechargeable battery
- Battery status indicator

### BC-5000-2 Battery Charger



### BC-5000-6 Battery Charger



### BC-5000-12 Battery Charger



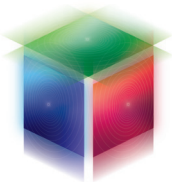
### AD-5000-2 AC Adapter



### AD-5000-6 AC Adapter



### WB-2000-2 Ni-MH Battery Pack



Human Society with  
Sound & Communication

TOA Corporation  
[www.toa.jp](http://www.toa.jp)

Specifications are subject to change without notice  
(1310)833-61-793-20 o