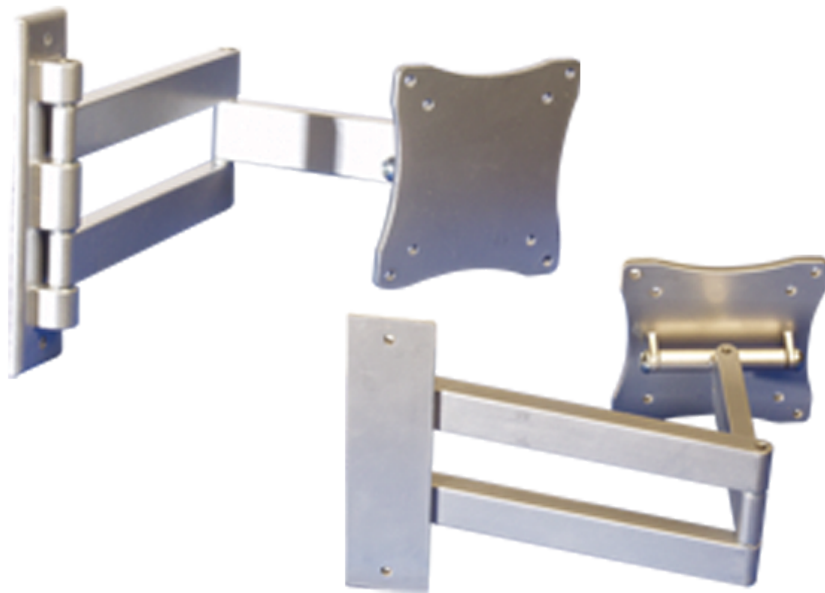


INSTALLATION MANUAL

FLAT LCD DISPLAY MOUNT MODEL

WB-30 Wall Mount Bracket

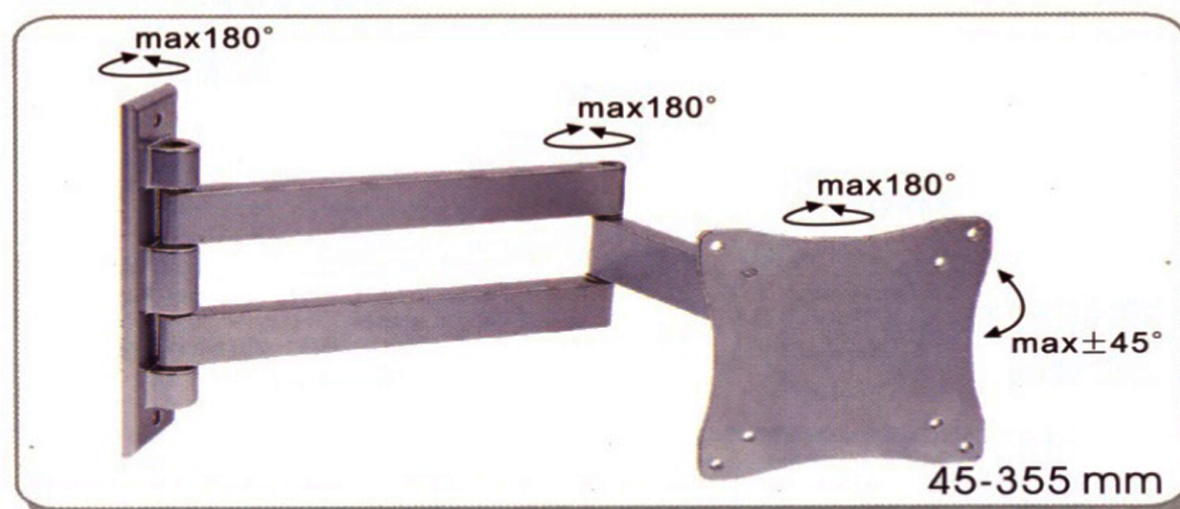
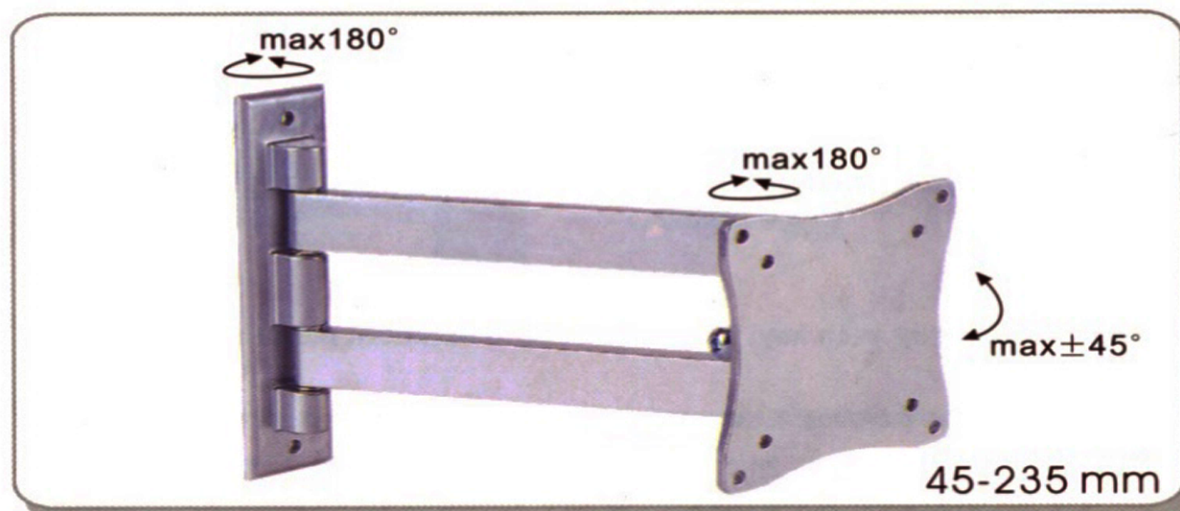
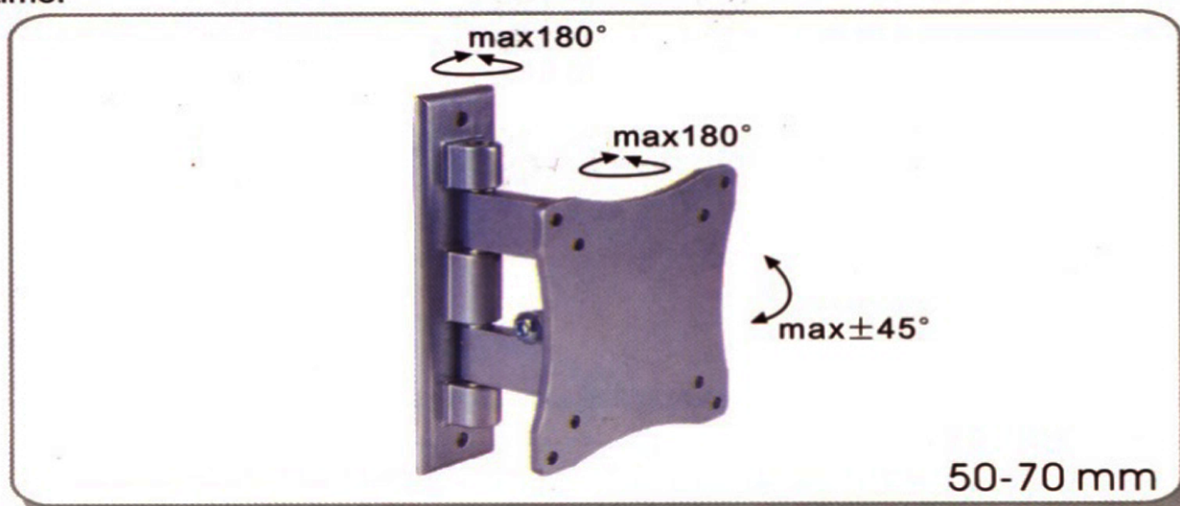


TOA ELECTRONICS, INC.

601 Gateway Boulevard, Suite 300
South San Francisco, California 94080
Telephone (650) 588-2538 Fax (650) 588-3349
<http://www.toaelectronics.com>

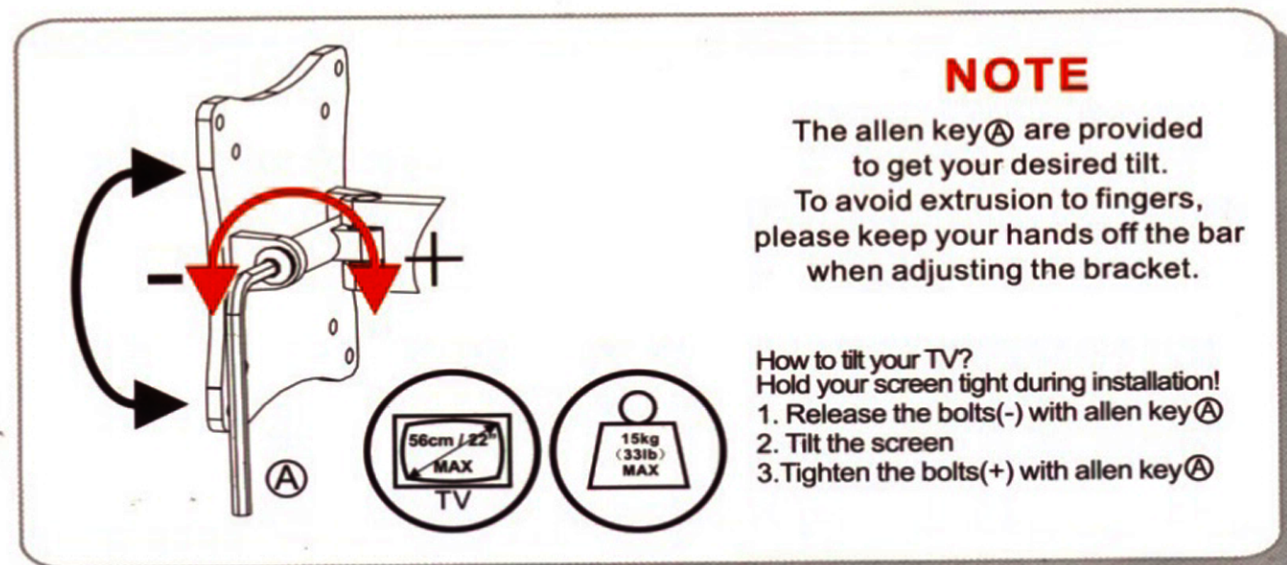
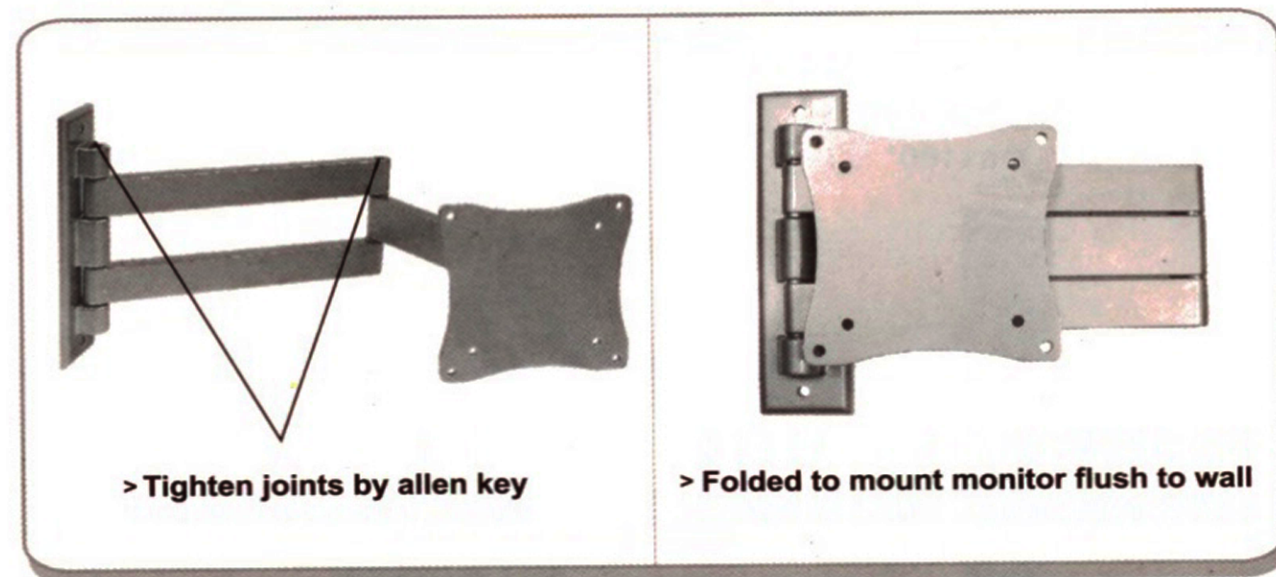
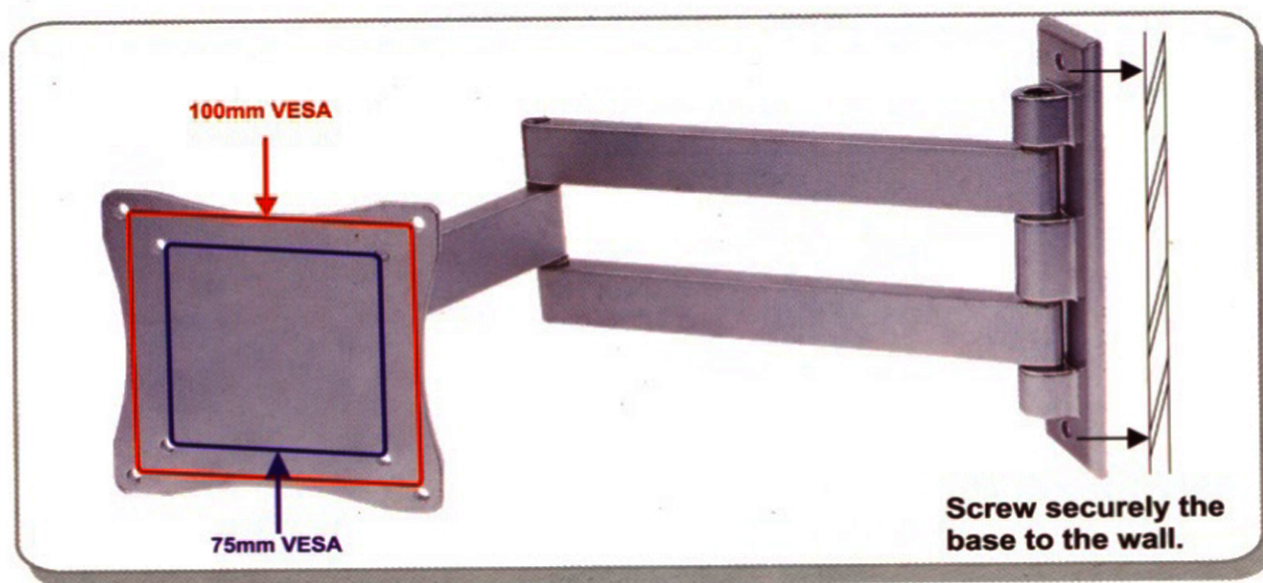
Installation guide

Thank you for your purchase of the new flat panel monitor /plasma TV swing arm bracket. This high quality product will give you many years of service. Its unique face plate design accomodates all VESA® standard 75mm and 100mm monitors. Just follow these simple instructions and you will be enjoying your new flat panel TV / monitor in no time!



VESA® is registered trademark of the Video Electronics Standards Association

Installation guide



CAUTION: Do not exceed 15 kg weight limit