

DIGITAL MIXER

D-901

The D-901's firmware can be updated using the software program (D901PCvxxx_e_fxxx.exe)*¹ made available on the TOA internet site [<http://www.toa-products.com/>]. To update the firmware, download the software program to install it into your PC. (For the installation procedure, refer to the "D901 PC Software Instruction Manual" also available on the same site.)

The firmware update is performed by using the D-901 Firmware Update Utility program simultaneously installed with the D-901 PC Software.

Follow the procedure for the firmware update below.

After updating the firmware, use the latest D-901 instruction manual that can also be downloaded from the website above.

*¹ The software version number can be confirmed at the xxx indication. For example when the PC Software version is 3.00 and Firmware version is 3.01, it is indicated as "D901PCv300e_f301.exe".

Step 1. Connect both RS-232C ports of the D-901 and the PC using a 9-pin straight cable (male-to-female cord).

Step 2. Make RS-232C port settings at the D-901.

Set the control mode to "UPDATE"^{*2} and the transmission rate to "115200 bps" (recommended).

*² Set "NONE" for the version 1.xx firmware.

2-1. Press the UTILITY key on the D-901's front panel.
The Stereo Link setting screen is displayed.



2-2. Press the ▼ shift key several times until the RS-232C port setting screen is displayed.
The number of key depressions depends on the D-901's module configuration.



2-3. Rotate the Setting knob to set the Control mode to "UPDATE"^{*2}.



2-4. Press the ▶ shift key to display the setting screen of the RS-232C port transmission rate.

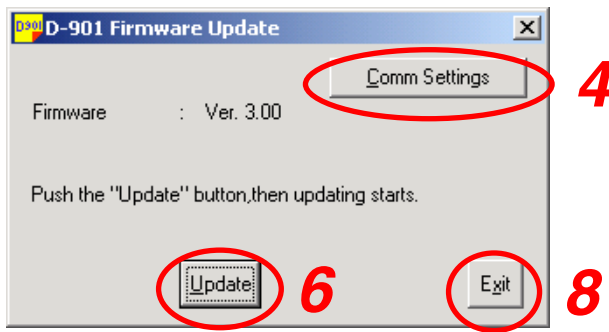


2-5. Rotate the Setting knob to set the transmission rate to "115200 bps" (recommended).



Step 3. Select the menu items [Start → Program → TOA Digital Audio Control → Update D-901 Firmware] on the PC.

The D-901 Firmware Update screen appears.



The default communication settings are as follows:

Communication port: COM 1

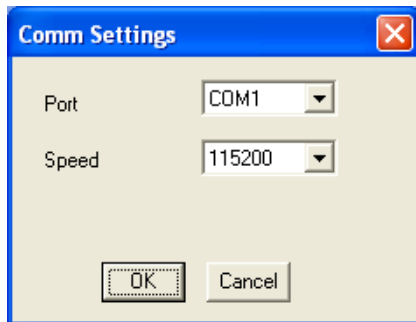
Baud rate: 115200 bps

Unless otherwise necessary to change, follow **Step 6**.

To change the settings, follow **Step 4**.

Step 4. Click the [Comm Settings] button.

The Comm Settings screen appears.



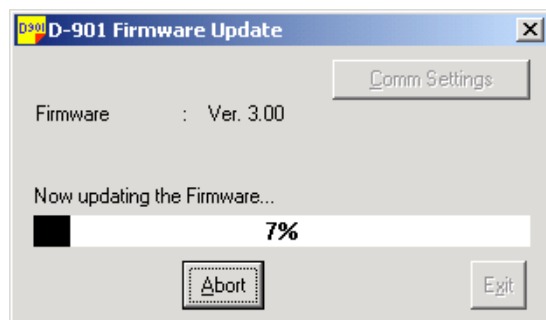
Step 5. Set the PC's Com port the D-901 is connected to, and the Speed (baud rate*) equal to the D-901's RS-232C transmission rate.

Click [OK], then the Comm Settings screen closes.

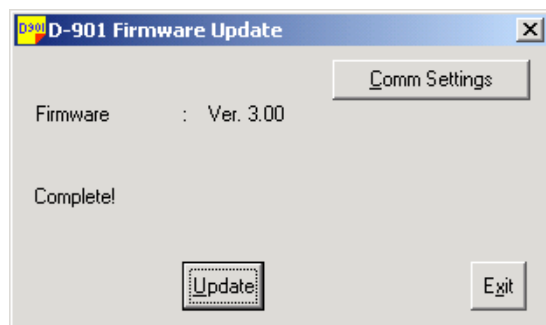
* Set the same value as that set in **Step 2**.

Step 6. Click the [Update] button of the D-901 Firmware Update screen.

The firmware update starts being transferred from the PC to the D-901.



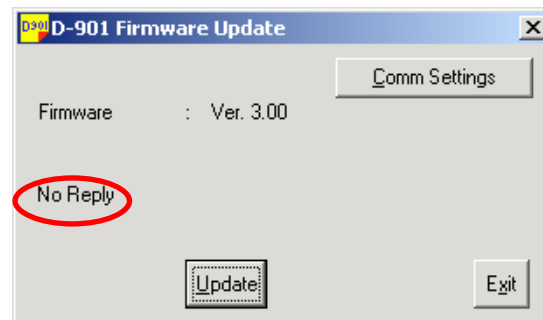
The following screen appears after the update ends.



[If "No Reply" is displayed]

If the screen on the right appears after clicking the [Update] button, confirm the following:

- RS-232C cable specification and connection
Check that 9-pin straight cable (male - female) is used.
- RS-232C settings at the D-901 (**Step 2**)
Check that the control mode is set to UPDATE*.
* Set "NONE" for the version 1.xx firmware.
- PC communication settings (**Step 4**)



After confirming all the above items, follow the procedure from **Sep 3** again.

If the same "No Reply" indication still appears in this **Step 6**, turn the D-901's power off, and on again. Then, follow the steps again from the beginning.

Step 7. Turn the D-901's power off, and on again.

Confirm the firmware version number that appears on the LCD screen at the unit's power-on. When the new version number is indicated, update has been completed correctly.

TOA D-901 Series
Software Ver 3.00

Using the Utility key can also indicate the firmware version number on the LCD screen.

[UTY] ► VERSION ▲
3.00.000

[If an error indication appears on the D-901's LCD screen] (See the screens below.)

Click the Update button of the D-901 firmware update screen, and "Complete!" is displayed on its screen. Then, the error indication disappears.

After confirming its disappearance, restart the procedure from **Step 2** without turning the D-901's power off.

<<SYSTEM ERROR>>
TYPE : ff00

or

<<SYSTEM ERROR>>
TYPE : ff01

Step 8. Click the [Exit] button to end the firmware update.